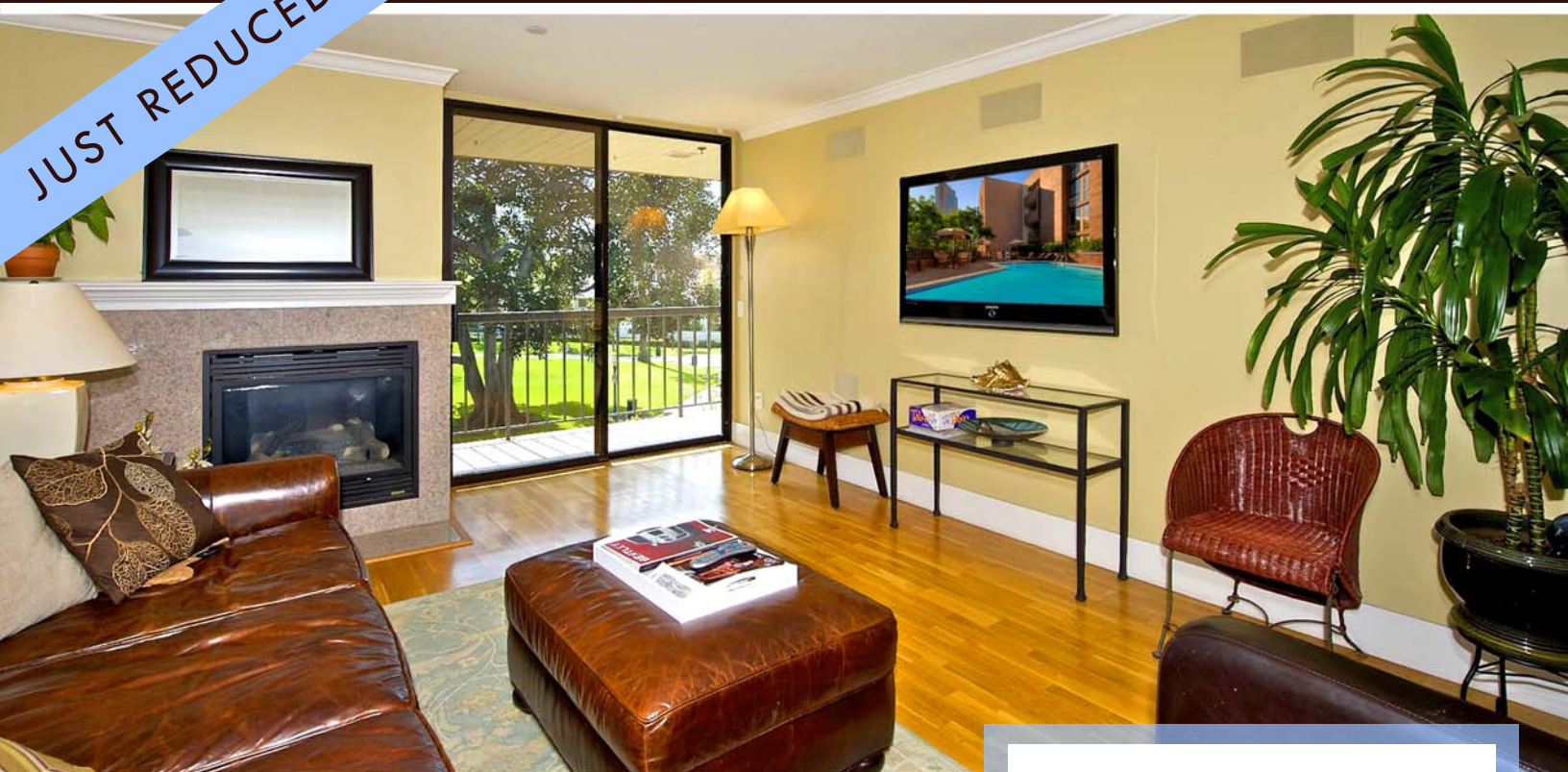


JUST REDUCED



M A R I N A P A R K

850 STATE STREET . RESIDENCE 231
SAN DIEGO . CALIFORNIA . 92101

Enjoy the warm natural light and views of Pantoja park from this open 3 Bedroom Southwest facing unit. Hardwood floors, granite counter tops, travertine floor entry and all new bathrooms remodeled with marble and travertine are just some of the great upgrades offered in Residence 231. As the largest model in Marina Park, this home's convenient downtown San Diego location makes it a perfect urban sanctuary. 🏡

M A R I N A P A R K RESIDENCE 231

- 3 BEDROOM
- 2 BATH
- APPROX 1,586 SQ FT
- 2 PARKING SPACES

OFFERED AT
~~\$ 675,000~~

\$ 625,000

Kim Kelsey



619.251.4398

KimAKelsey@yahoo.com

www.KimAKelsey.com

