

WATERMARK CONDOMINIUMS

DOWNTOWN SAN DIEGO | CALIFORNIA 92101

RESIDENCE 208

650 COLUMBIA STREET # 208
SAN DIEGO, CALIFORNIA 92101

1 Bedroom / 1.5 Bath
Approx 1,030 Sq Ft
12 foot Ceilings
Balcony faces interior courtyard
1 Parking Space
Lease for \$2,200 / Month

RESIDENCE 220

655 INDIA STREET # 220
SAN DIEGO, CALIFORNIA 92101

1 Bedroom / 1.5 Bath
Approx 1,030 Sq Ft
12 foot Ceilings
Balcony
1 Parking Space
Lease for \$ 2,000 / Month

RESIDENCE 320

655 INDIA STREET # 320
SAN DIEGO, CALIFORNIA 92101

1 Bedroom / 1.5 Bath
Approx 1,030 Sq Ft
12 foot Ceilings
Balcony
Stone countertop
Stainless steel appliances
1 Parking Space
Lease for \$ 2,100 / Month

WATERMARK CONDOMINIUMS OFFERS . . .



The WaterMark community offers a 24-hour Attendant and a plethora of amenities on the 5th level. Residents and their Guests can enjoy the Rooftop Sun Deck, BBQ, Fitness Center and an Entertainment Suite perfect for a variety of soirees. The Entertainment Suite is great for entertaining with it's full Kitchen, large flat screen TV, DVD player, Fireplace, couches, many tables and chairs perfect for dining or playing one of the board games from the entertainment center's shelves. Additionally there are two outdoor private gardens perfect for a midday stroll. Enjoy one of San Diego's oldest parks, Pantoja Park... it is right across the street.

Conveniently located in the heart of the Marina District, WaterMark Condominiums is within walking distance to all that downtown San Diego has to offer. Many of your daily needs and wants will be meet. Just steps away are a myriad of cultural attractions like Seaport Village, the San Diego Convention Center, Horton Plaza, PETCO ballpark, The Gaslamp Quarter and much more...



SCAN ME

PATRICIA LEONE

Centre City Properties DRE License # 01076944

619.238.6886 OFFICE



WWW.CENTRECITYPROPERTIES.COM

A STRATEGIC PARTNER OF
UNIQUE HOMES
LUXURY MEDIA



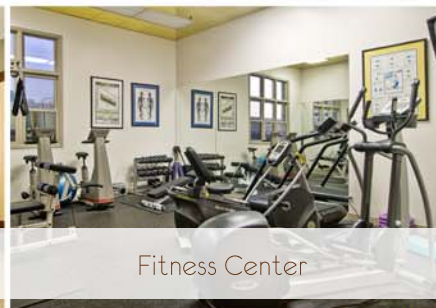
619.991.5987 CELL



Rooftop Sundeck



Entertainment Suite



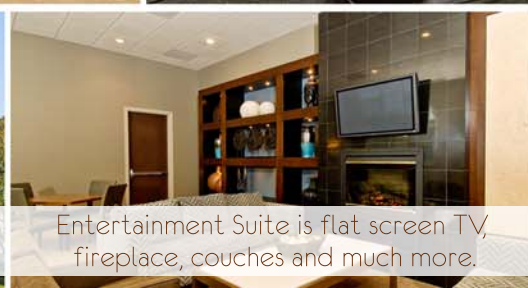
Fitness Center



Entertainment Suite is complete with a Full Kitchen



Pantoja Park



Entertainment Suite is flat screen TV, fireplace, couches and much more.



WaterMark Condominiums is located downtown San Diego

WATERMARK CONDOMINIUMS

DOWNTOWN SAN DIEGO | CALIFORNIA 92101

RESIDENCE 208

650 COLUMBIA STREET # 208
SAN DIEGO, CALIFORNIA 92101

1 Bedroom / 1.5 Bath
Approx 1,030 Sq Ft
12 foot Ceilings
Balcony faces interior courtyard
1 Parking Space
Lease for \$2,200 / Month

RESIDENCE 220

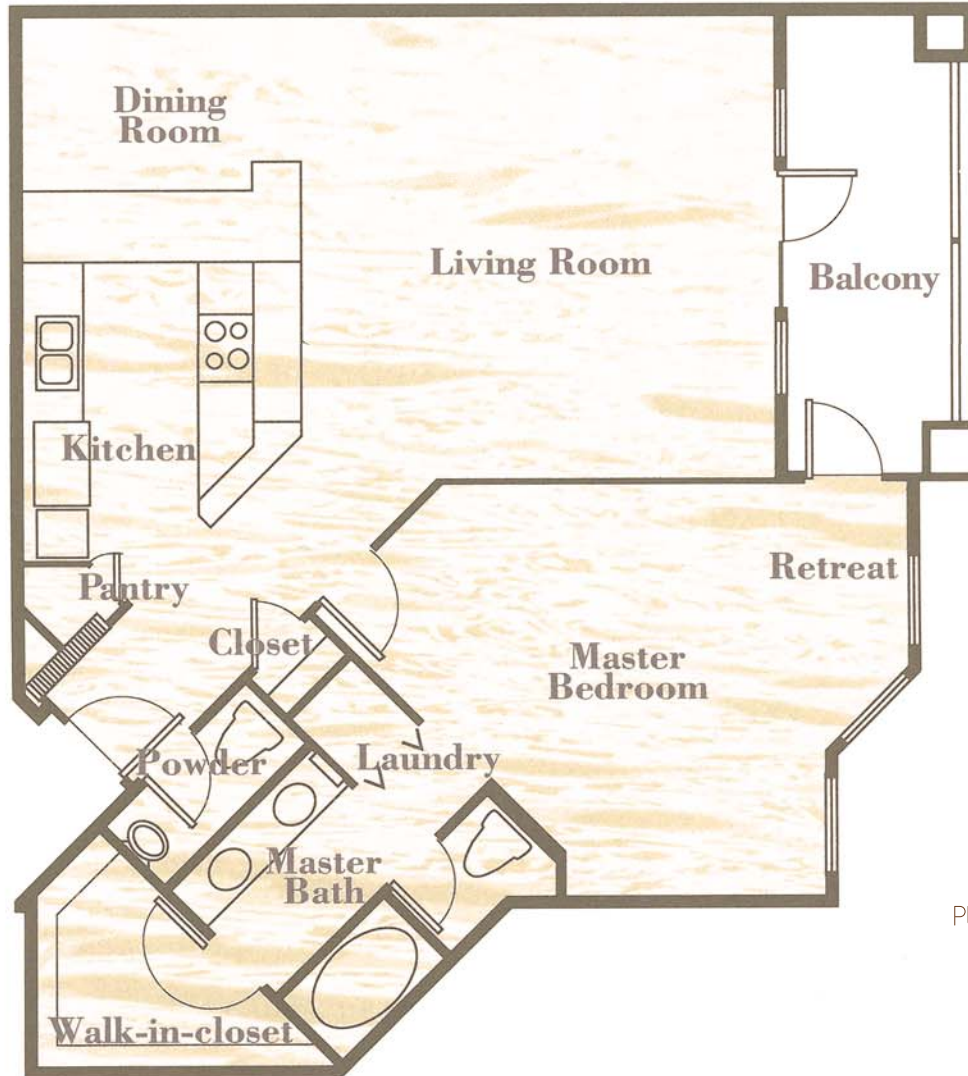
655 INDIA STREET # 220
SAN DIEGO, CALIFORNIA 92101

1 Bedroom / 1.5 Bath
Approx 1,030 Sq Ft
12 foot Ceilings
Balcony
1 Parking Space
Lease for \$ 2,000 / Month

RESIDENCE 320

655 INDIA STREET # 320
SAN DIEGO, CALIFORNIA 92101

1 Bedroom / 1.5 Bath
Approx 1,030 Sq Ft
12 foot Ceilings
Balcony
Stone countertop
Stainless steel appliances
1 Parking Space
Lease for \$ 2,100 / Month



Please note that the floorplan for

RESIDENCE 220

and **RESIDENCE 320**
are the reverse of this floorplan

PATRICIA LEONE

Centre City Properties DRE License # 01076944

619.238.6886 OFFICE



A STRATEGIC PARTNER OF
UNIQUE HOMES
LUXURY MEDIA



WWW.CENTRECITYPROPERTIES.COM

619.991.5987 CELL